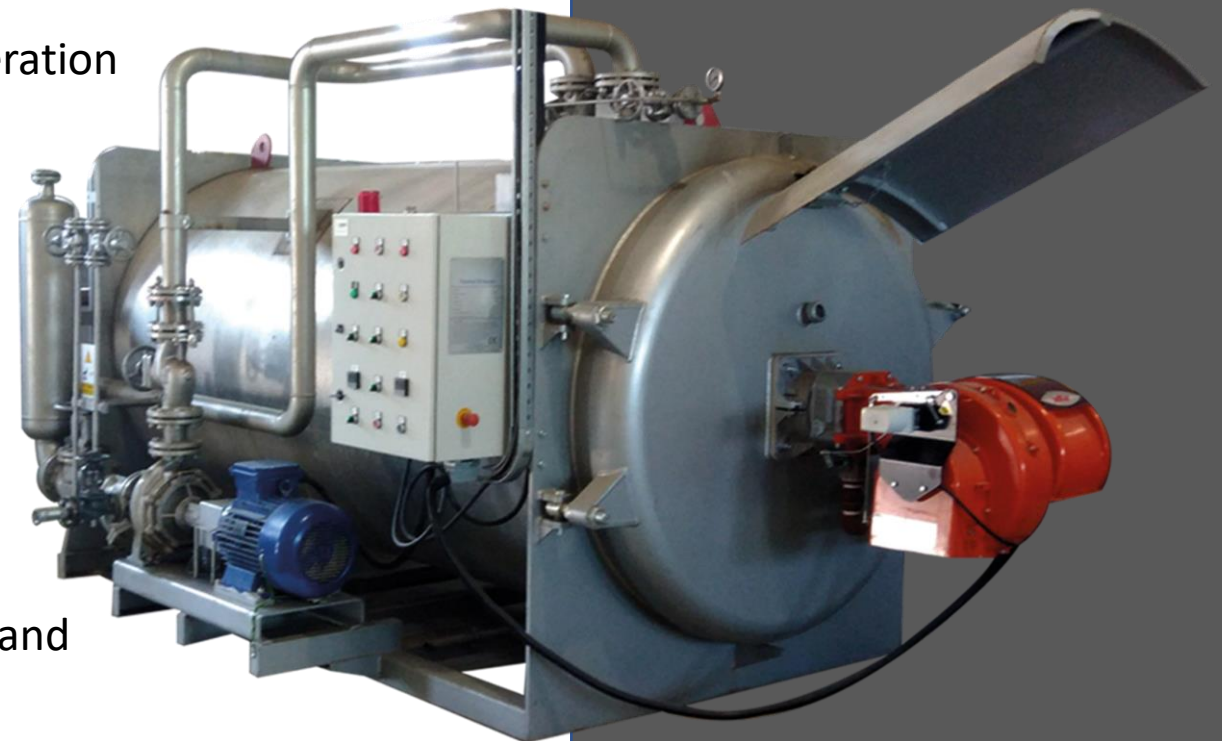


THERMAL OIL HEATER

Thermal oil heater is an indispensable part of your asphalt plants and bitumen handling systems with its high efficiency, compact design, ease of use and low fuel consumption.

MAIN FEATURES

- ◆ Engineered to work at closed loop thermal oil heating systems under atmospheric pressure where oil heated up to 250°C and circulated with pump.
- ◆ Double helix heating coil design ensures long term operation and quality without any thermal cracking of the oil.
- ◆ Suitable for all types of commercial burners such as diesel, fuel oil, natural gas and combi with the large combustion chamber.
- ◆ Burner can be replaced without any need for cable connection, thanks to its plug-in-socket design.
- ◆ Long term operation with high capacity ALLWEILLER brand thermal oil circulation pumps.



THERMAL OIL HEATER

ITAL MACHINERY

MACCHINA ITALIANA

MAIN FEATURES

- ◆ Safe operations via digital thermostatic controller for controlling oil temperature at oil inlet and outlet.
- ◆ Flow and pressure safety with differential pressurestat at oil inlet and outlet pipes.
- ◆ Compact design ensures easy transportation (can fit into 20' container) and assembly.

TYPES

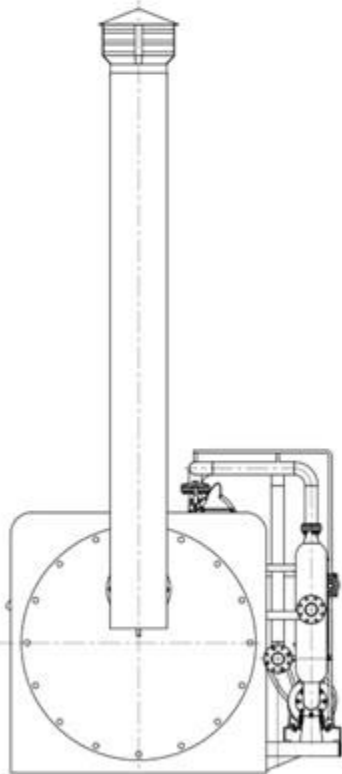
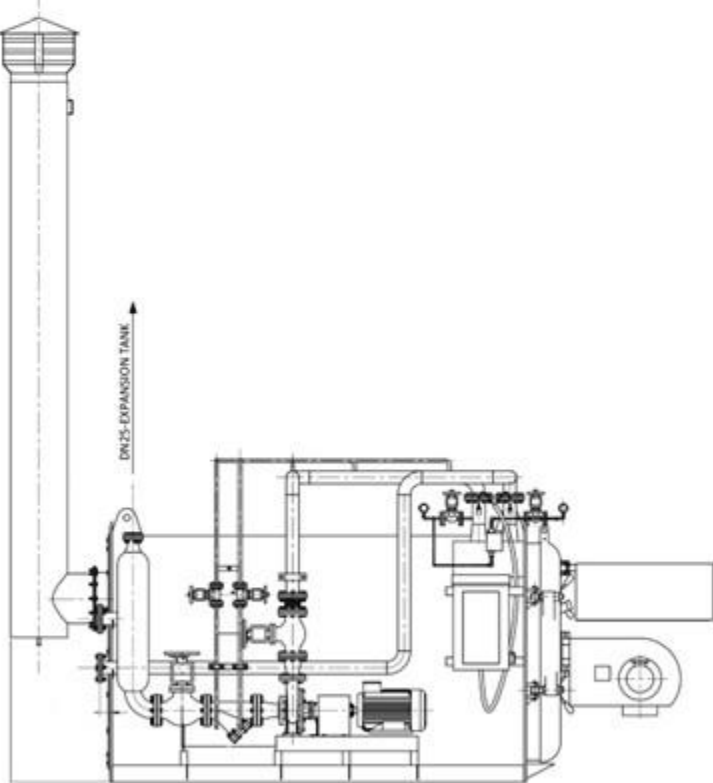
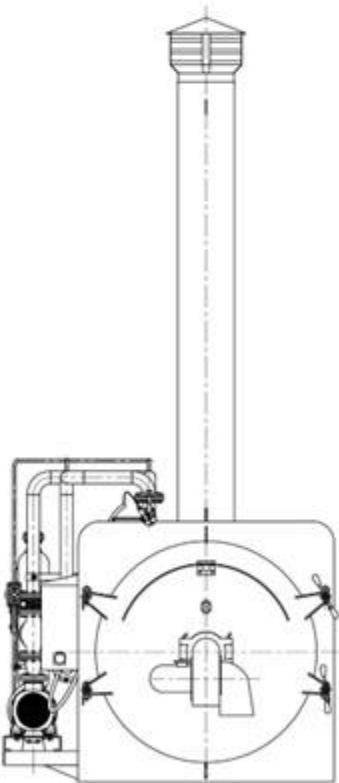
- ◆ 1.000.000kCal/h
- ◆ 800.000kCal/h
- ◆ 500.000kCal/h



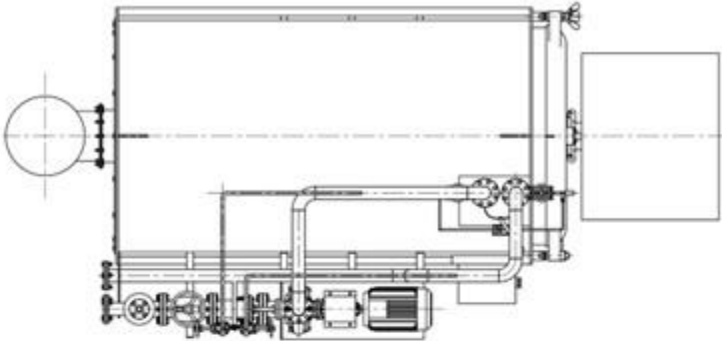
THERMAL OIL HEATER

ITAL MACHINERY
MACCHINA ITALIANA

PRODUCT OVERVIEW - FLOW CHART



← DN80 - OUTLET
DN80 - INLET →



← DN80 - INLET
DN80 - OUTLET →

CONTACT US



italmachinery.com.ua



sales@italmachinery.com.ua



+38 (067) 271 61 61

+38 (067) 371 61 61

+38 (067) 801 77 00

+38 (096) 449 32 08



facebook.com/italmachinery



[@italmachinery](https://instagram.com/italmachinery)



[Ital Machinery](https://YouTube.com/ItalMachinery)

ITAL MACHINERY
MACCHINA ITALIANA

